



The Hollies

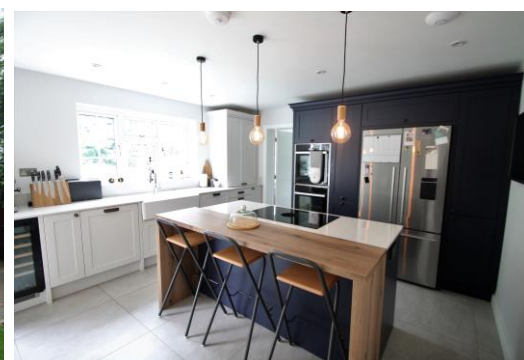
Hare Lane

Little Kingshill

HP16 0EF

Monthly Rental Of £2,995

- A delightful detached, refurbished home in Little Kingshill
- Situated on a quiet country lane on the fringes of the village
- Stunning rural views
- Four bedrooms, master ensuite
- Two reception rooms and a fabulous family kitchen
- Integral double garage, driveway parking, enclosed rear gardens



01494 864225

lettings@wyecountry.co.uk

wyecountry.co.uk

The Hollies Hare Lane Little Kingshill HP16 0EF

PROPERTY FACTS

The Hollies is a modern four bedroomed detached house situated in a quiet rural lane in the very desirable village of Little Kingshill. A wood burning stove is a feature of the spacious, double aspect sitting room. The kitchen has been newly redesigned and features an island with seating along with space for a large dining table. French doors open from the lounge and the kitchen on to the brick paved patio leading to the enclosed garden with an additional decked patio to catch the evening light. A rear interior porch adjoining the refitted utility room leads to the integral double garage with electric doors.

On the first floor, three of the four bedrooms, including the master, have lovely views over the fields to the front with the master offering an ensuite shower room. A family bathroom completes the accommodation. To the front there is an extended driveway providing further parking for several cars. This property is available on an unfurnished basis from the end of September.

LOCATION FACTS

Little Kingshill is a small village on the outskirts of Great Missenden. It is located in the Chiltern Hills, about two and a half miles south of Great Missenden and about five miles northwest of High Wycombe. The village has its own primary school catering for children 3-11 years. The village has a pub, playing fields, a Baptist church and is surrounded by Green Belt countryside. Shopping facilities are available in Great Kingshill, Prestwood and Great Missenden. A main line rail link is available from Amersham, High Wycombe and Great Missenden, taking approximately 40 minutes into Central London.

DIRECTIONS

From our offices in Great Missenden, follow the High Street towards Amersham. After just under one mile, turn right into Nags Head Lane (by the Nags Head pub). The road bends under a railway bridge, follow this round to the left. At the top of the hill, you will enter Little Kingshill village. Continue through the village and turn right into Hare Lane. Continue past The Full Moon Pub and into the narrow part of the lane past New Road. The property will be found immediately on the left hand side.

